

Supporting survivors of interpersonal violence

ILEANA AGUILAR (SHE//ELLA)
COMMUNITY EDUCATION BILINGUAL TRAINING SPECIALIST
IAGUILAR@SAFEAUSTIN.ORG



SAFE serves survivors of domestic violence, child abuse, sexual assault, human trafficking, and sexual harassment in Central Texas.

SAFE Services

24-hour,
confidential **call-
line, text-line,
chat-line**

Eloise House:
**Sexual assault
forensic/medical
exam clinic**

SAFE CARES:
Support for
**survivors of
trafficking**

Free, confidential
**counseling
services**

Preventive and
educational
programs

Legal advice

Emergency shelter

Advocacy and
safety planning

What we know about interpersonal violence...

- It's a choice
- It's a learned behavior
- It can happen to anyone
- It happens across communities
- It disproportionately affects people based on their identity(ies)
- It's a cycle

Raise your hand if you have ever experienced this...



Being in love.

Made excuses for a partner's inappropriate behavior toward you.

Checked your partner's cell phone or text messages without their permission.

Felt scared/anxious that the person you love was going to leave you.

Saw, heard or experienced violence (verbal, physical, sexual) growing up.

Found it difficult to express your emotions to your friends, family or partner because you were afraid of how they would react.

Taken care of others' needs before taking care of your own.

Stayed in a relationship, even after you felt that it was no longer working for you.

Stayed in a relationship that made you unhappy because you didn't want to be single/alone, you didn't want to be a single parent or you couldn't financially afford your mortgage, rent or bills on your own.

Stayed in a relationship with the hope that your partner would change.

Domestic Violence

Pattern of behavior used to attempt to control, manipulate, or demean an intimate partner using tactics such as physical, emotional, economic, sexual abuse, and reproductive coercion.

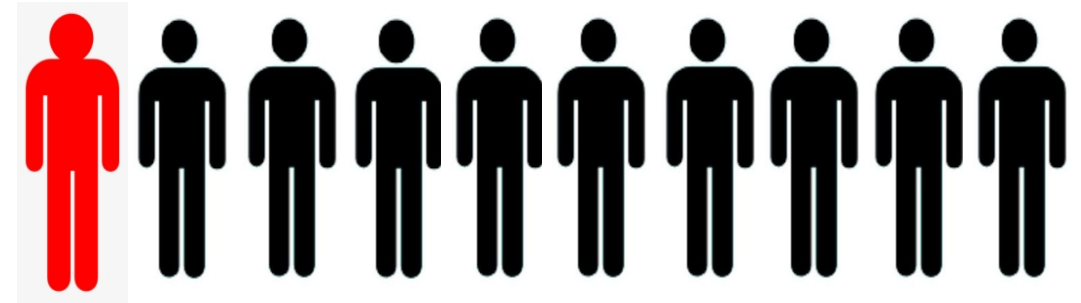
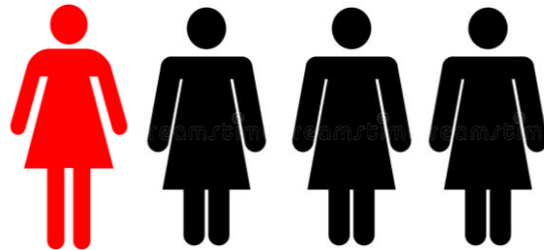




Adapted from the Duluth Model Power and Control Wheel

Prevalence

According to the National Coalition Against Domestic Violence,



* Smith, S.G., Zhang, X., Basile, K.C., Merrick, M.T., Wang, J., Kresnow, M. & Chen, J. (2018). The national intimate partner and sexual violence survey: 2015 data brief - updated release. Atlanta: National Center for Injury Prevention and Control, Centers for Disease Control and Prevention. Retrieved from <https://www.cdc.gov/violenceprevention/pdf/2015data-brief508.pdf>.

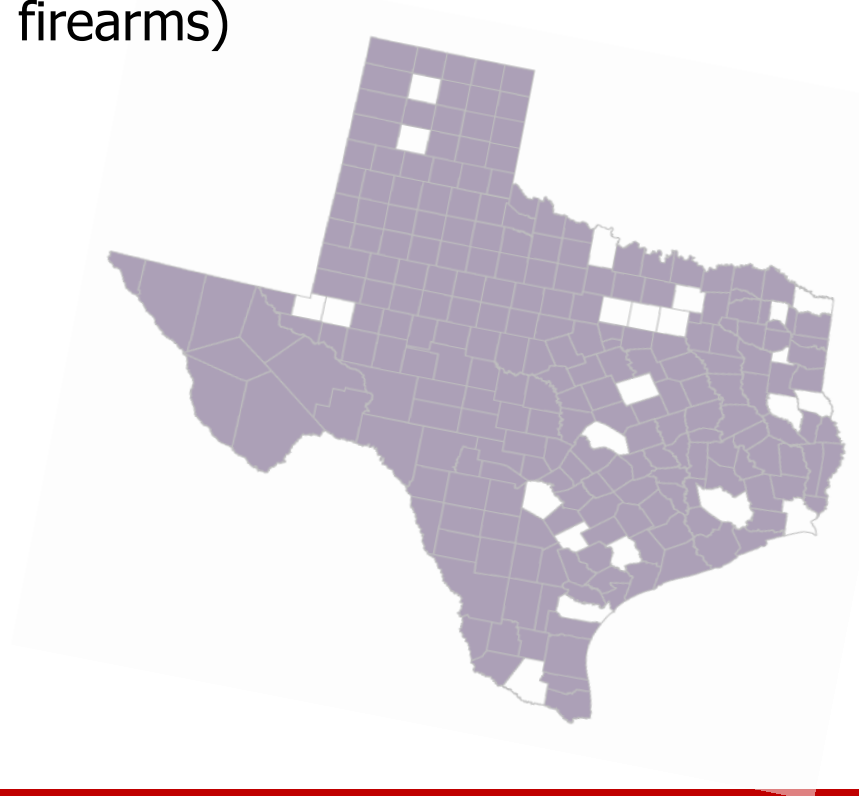
Honoring Texans Victims Report 2020

228 Texans were killed by their intimate partner in 2020.

- 183 women were killed by their male intimate partner (65% used firearms)
- 40 women killed their male intimate partners (70% used firearms)
- 5 people were killed by same – sex partners.

Family violence incidents increased 10% in 2020.

Source: Texas Council of Family Violence



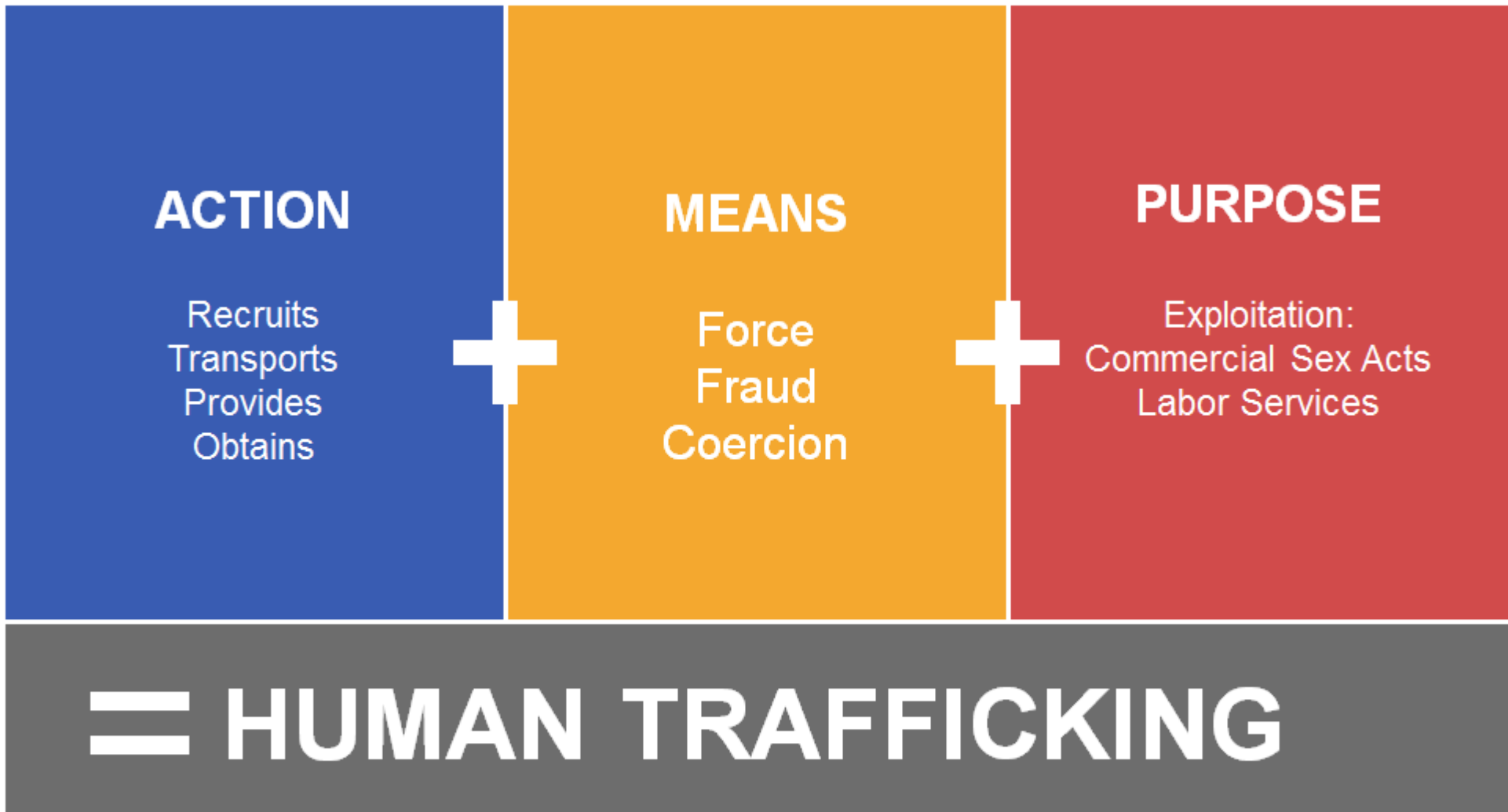


Human Trafficking

Form of modern day slavery in which traffickers use
force, fraud, or coercion*
to **control** victims for the **purpose of engaging**
in **commercial sex acts** or **labor services** against his/her will.

*If the victim is under the age of 18 force, fraud, or coercion need not be present to be a victim of trafficking.

National Human Trafficking Resource Center



* Force, Fraud, Coercion are not required for minors under age 18 induced into commercial sex

Sexual Assault

From our state coalition, **TAASA**: the Texas Association Against Sexual Assault

- “Generally, sexual assault is **any unwanted, non-consensual sexual contact** against any individual by another using **manipulation, pressure, tricks, coercion or physical force**. It is any act a person is forced to perform or receive that includes touching of the genitals or breasts. This includes rape, sodomy, touching or oral sex where the victim is unwilling or unable to give verbal consent, including being under 17 years old, intoxicated, drugged or unconscious.”

VS.

Texas Penal Code

A person commits a sexual offense if the person:

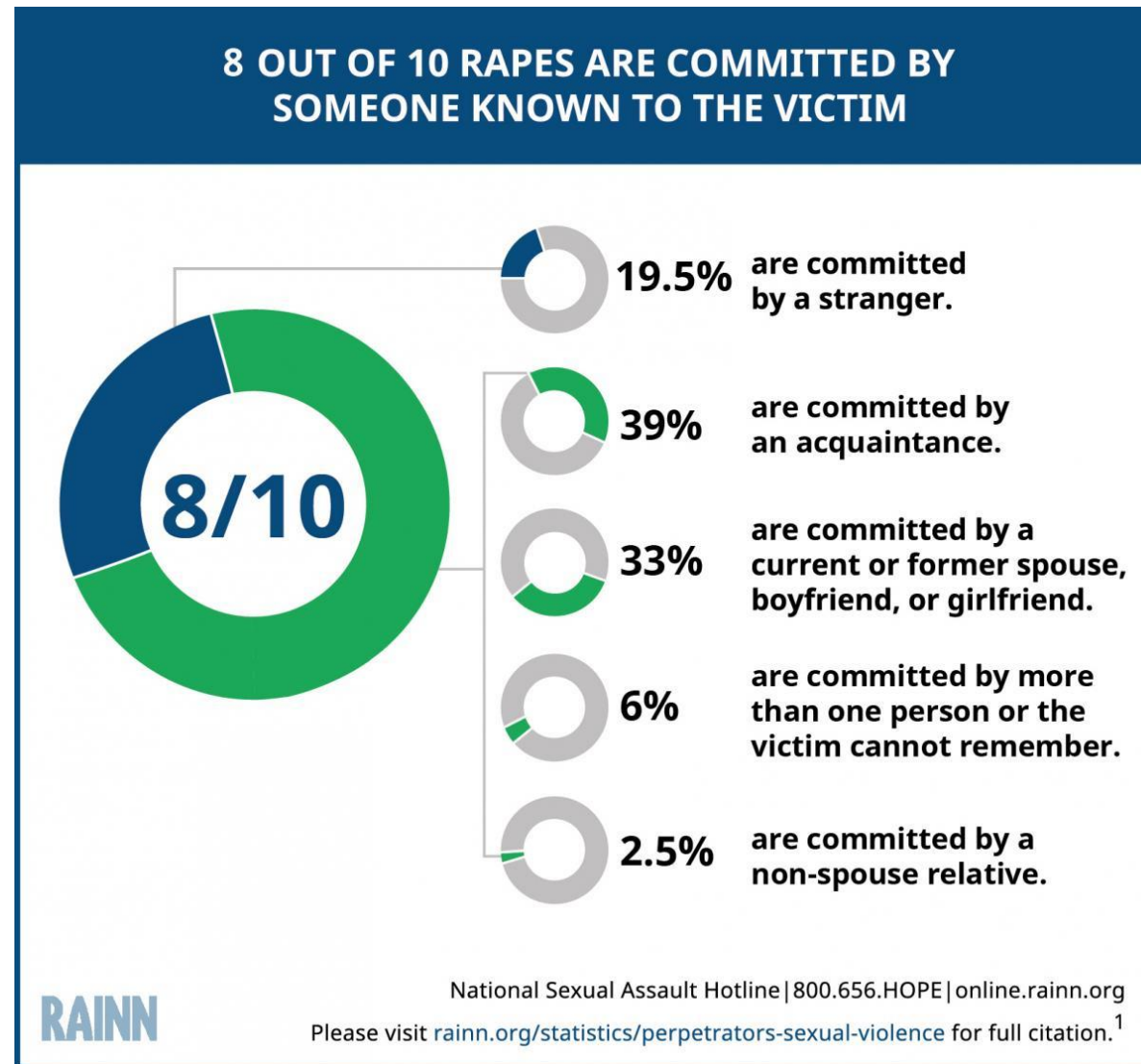
- Intentionally or knowingly causes the **penetration** of the mouth, anus or sexual organs of another person by any means, **without that person’s consent**
- For more info or full detail of state laws, visit www.capitol.state.tx.us or www.texas.gov

Sexual Violence

- Every **68 seconds another American is sexually assaulted**.
- **1 out of every 6 American women** has been the victim of an attempted or completed rape in her lifetime (14.8% completed, 2.8% attempted).
- About **3% of American men** have experienced an attempted or completed rape in their lifetime.

Source: RAINN.org

Who are the perpetrators?



1. Department of Justice, Office of Justice Programs, Bureau of Justice Statistics, National Crime Victimization Survey, 2010-2016 (2017).



Scenario 1

Skyler and Jordan are volunteers assigned to pour beer in the same brewery's booth. As the volunteer shift progresses, Jordan begins making more frequent and more inappropriate comments to Skyler, objectifying the customers' bodies as the customers walk away after being served. Skyler ignores it at first, but as the shift progresses, Jordan begins to crowd Skyler's physical space, often brushing up against them unnecessarily, and seems to be paying more attention to Skyler than to the customers in line. Skyler flags down a beer captain and asks for a break so they can figure out what to do.

- 1.- What do you think you would do if you were in Skyler's place?
- 2.- What would you do if you witnessed this situation?

Scenario 2

A brewery owner named Sam is at the festival as an VIP attendee. Sam is married to Morgan, who is employed by another brewery, and is on site working as a beer server in their brewery's booth for the day. You notice that Sam seems to linger near the tent where Morgan is working, and that when Morgan takes a break, Sam always seems to make physical contact with Morgan as they move around the park. Another volunteer tells you that they heard Sam and Morgan fighting in the bathroom line, with Sam loudly and aggressively accusing Morgan of flirting with an unknown festival attendees while pouring beer.

1.- What would you do after receiving this information?

Scenario 3

Alex is attending the Festival with a group of friends. While their group is in line for samples, Alex turns around and collides with another individual, Casey, spilling both Alex's and Casey's drinks almost entirely on Alex's shirt, shorts, and bare legs. Casey attempts to dab away the spilled beer on Alex's clothes and body, despite Alex verbally protesting and attempting to move away from Casey. Later that afternoon, Casey "bumps into" another friend in Alex's group.

1.- What would you do if you witness these interactions?

The 5Ds of being an upstander

Direct -- Intervening in the moment, indicating the inappropriate behavior to stop the harmful interaction. For example saying: "That is sexist!" Or "That is homophobic, you are hurting people." Or "Hey, you are invading their personal space."

Distract -- Create a verbal or physical distraction to interrupt the harmful behavior.

For example: Calling one of the people involved (either the person being abusive, or the person getting impacted) "Excuse me, I need your help taking this outside, would you come with me?" or spilling a drink, or interrupting the conversation completely changing the topic "I have some news"

Delay -- Approaching later and in private the people involved (either the person who used abusive behaviors or the person impacted, or both – separately -) to have a conversation about the incident.

For example: "How are you feeling? I heard what X told you and I thought that was inappropriate. Do you need anything?"

Delegate -- Reach out to third person you consider better equipped to handle the situation.

Document, document, document!!!

What to do if...

Someone discloses to you:

- Start by believing
- Let them know, it is not their fault
- Show empathy
- Assess safety
- Ask them what they would like to see happen
- Explore resources and options



Empowering vs. rescuing



Resources

SAFE | stop abuse for
everyone

24-hr SAFEline - Call: **512.267.SAFE (7233)**

Text: **737.888.SAFE (7233) |**

SAFEAustin.org/chat

Resources



FREE + CONFIDENTIAL + 24/7/365

